

You will be treated

You will be treated under the care of Consultants:-

Mr J.D Muir

Mr J Shah

Mr J.M Scholey

Miss K.J Jiggins

Miss L Mangnall

Miss S Kotecha

We are a teaching department so we have other dental care professionals that may participate in your treatment. Our department staff includes Senior Registrars, Registrars, Clinical Assistants and Dental Nurses.

You will be treated under

Tel No: 674653

Monday to Friday

9.00am to 1.00pm

2.00pm to 4.30pm

Visit our Website

www.uhns.nhs.uk

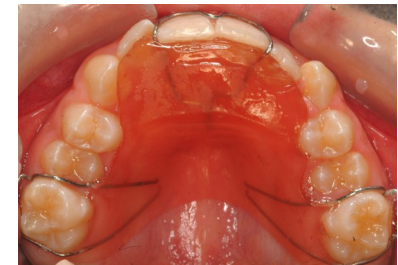
Click on 'our services'
then
'orthodontics'



University Hospital of North
Staffordshire

You will be treated

Removable Appliances



Tel No: 674653

Visit our website
www.uhns.nhs.uk
Click on 'our services'
then 'orthodontics'

Removable Appliances

- ◆ These are appliances which are worn full-time including meals. They are removed for cleaning.
- ◆ It is made of an acrylic plate which covers the roof of your mouth and it has wires and springs to move the teeth.
- ◆ It should be removed by using index fingers and gently pulling down on the clasps on the back teeth, avoiding distortion of delicate wires.
- ◆ Your teeth and jaws will feel a little tender for the first few days, and there will be some effect on your speech and the amount of saliva in your mouth. This is normal and will quickly disappear as you get used to the appliance.

- ◆ Failure to wear the appliance will result in a relapse of any progress already achieved.
- ◆ Even if you cannot wear your appliance for whatever reason, please remember to bring your appliance to your appointment.
- ◆ Failure to co-operate may lead to treatment being discontinued.
- ◆ In the event that your appliance has to be replaced due to neglect, a charge will be made to you.
- ◆ Cleaning is done with a normal toothbrush and toothpaste.
- ◆ The appliance should only be removed for swimming, contact sports and of course for cleaning.
- ◆ When the appliance is not in your mouth, it should be kept in a protective box. A plastic tupperware typebox is ideal or brace boxes are available to purchase from the orthodontic department.

